

# 3 & 4 STEP HANDRAIL

INSTRUCTIONS PN: 11-2353

11-2354



The handrail may be mounted to either side of the step.

If you have purchased a 4 step Todd dock step (11-2354) follow the directions included with the unit to assemble the steps prior to mounting the railing.

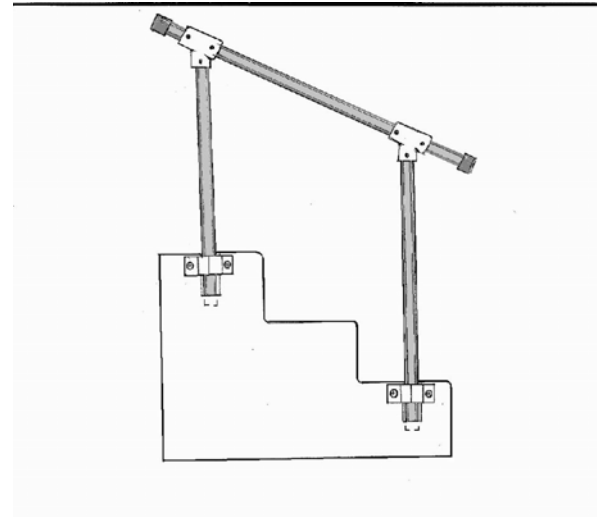
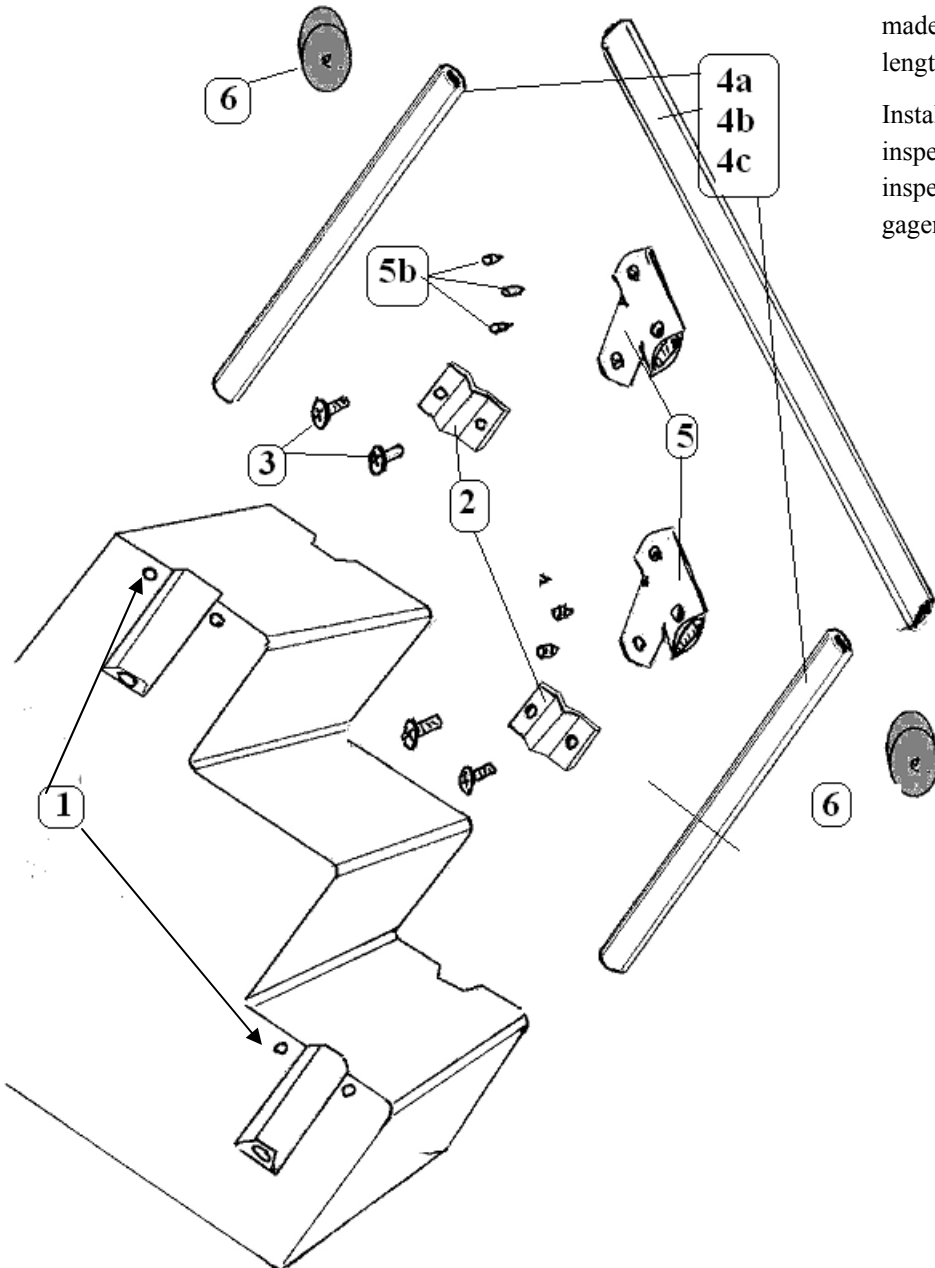
Begin by removing #5b set screws from the rail fittings. Save them. Place #4a & #4c into the pockets molded in for them on the stairs. The fit is tight, so that a gentle tap with a wood block at the top of the post may be necessary. (You must seat the post, yet not distort the top edge of the tubing.)

Install both item #2 bracket using the #3 screws into the #1 molded in inserts.

Install the #5 rail fittings on top of the posts, and slide the #4b top rail through the rail fittings. Adjust the position to suit your requirements, and lock into place with the #5b set screws which were first removed.

An adjustment to the length of the #5b top rail can be made with a hacksaw. Install the #6 end caps when length is confirmed..

Installation, has now been completed. It should be inspected for security prior to use. It is a good idea to inspect as often as is necessary, to prevent any disengagement of the railing from the assembly.



1. T-nut 1/4-20
2. Axle Bracket
3. Screw 1/4-20x1/2 Phillips
- 4a. Top Post
- 4b. Hand Rail
- 4c. Bottom Post
5. Rail fitting 60 deg.
6. Cap rail end