

Todd Quad Step Assembly Instructions

Parts list: 5 Steps, 5 machine bolts,
10 washers, 5 nuts

Tools required: Adjustable wrench, screw-
driver

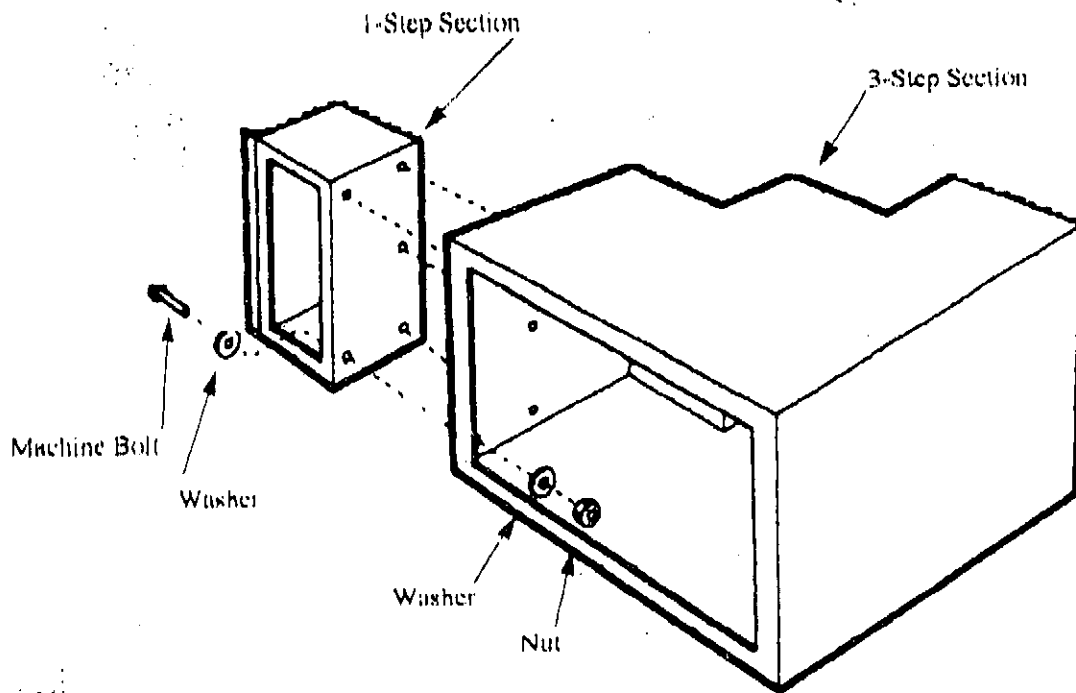
1. Place the section with 3 steps on it's side.
2. Remove the bolts, nuts and washers from
the 1-step section.

3. Align the holes in the 1-step section with
the holes in the 3-step section.

4. Place a washer on each of the bolts and
insert them through the holes.

5. On the inside of the section, add a wash-
er and nut to each of the bolts and finger
tighten.

6. Tighten all the nuts and bolts securely.



530 Wellington Ave., Cranston, RI 02910